

SIR SIGNATURE HOMES



16 Dexter Road, Westport

BRAND NEW SIR SIGNATURE HOME on a quiet cul-de-sac in sought after Long Lots neighborhood - You can move right in and be ready for school! 6 BDRMS finished on 4 levels w/ 5300 Sf. This perfectly sized gem is impeccably crafted inside and out w/ bright modern interiors, flawless finishes, a sleek white custom SIR kitchen w/ high end stainless steel appliances that opens to family room w/ fireplace. Flooded with southern expo, the sliding glass doors lead to fully fenced backyard perfectly safe for dogs & children to play! The side doors flanking the FP steps out to bluestone patio w/flat private yard & room for 20x34 pool. The primary suite features a large walk-in closet, spa bath w/ soaking tub & oversized shower. Work From Home on private finished third floor w/ 5th bedroom, full bath and bonus room. Lower level features gym, playroom/media, 6th bedroom w/ full bath. The home has a generator, sod lawn & irrigation system. Instant neighborhood for walking, jogging & Biking. Make new friends during the many local block parties that include Halloween and Summer kick off!

Listed by: Julie Haroun, (203) 856-2616



943 Post Road East, Westport, Connecticut
203.227.6616 | www.sirdev.com | Julie@sirdev.com

Appliances

- 36" Bosch Gas Cooktop
- 36" XO Wall Hood
- 30" Bosch Double Wall Oven
- 36" Bosch Refrigerator
- 24" Bosch Dishwasher
- 24" Microwave

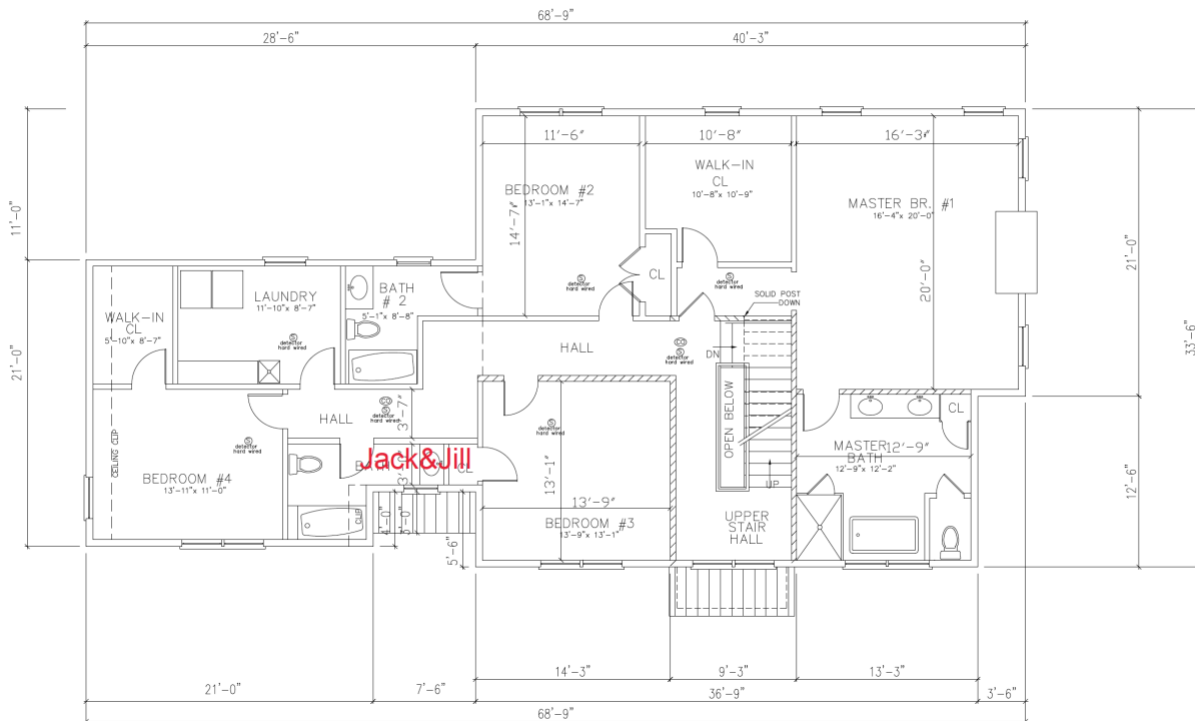
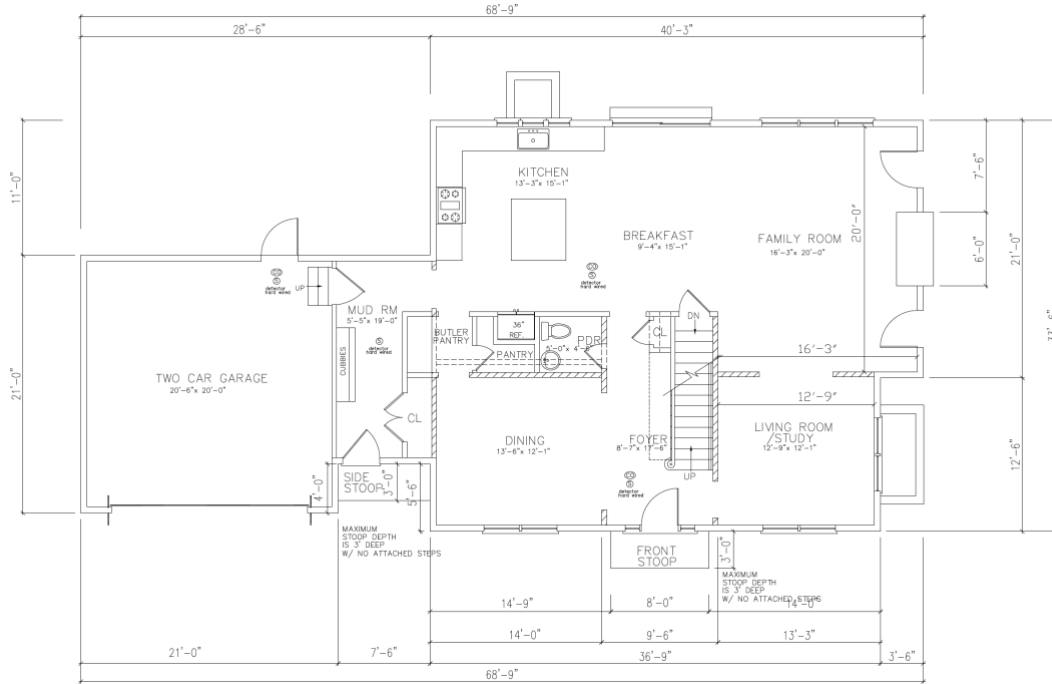




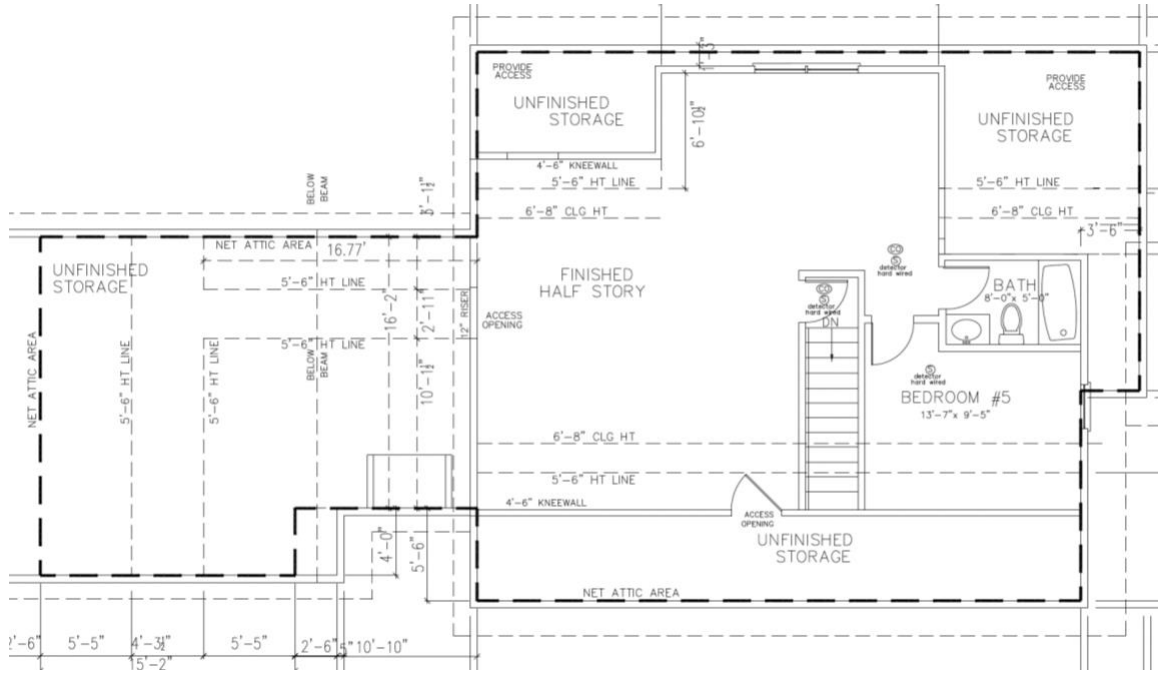




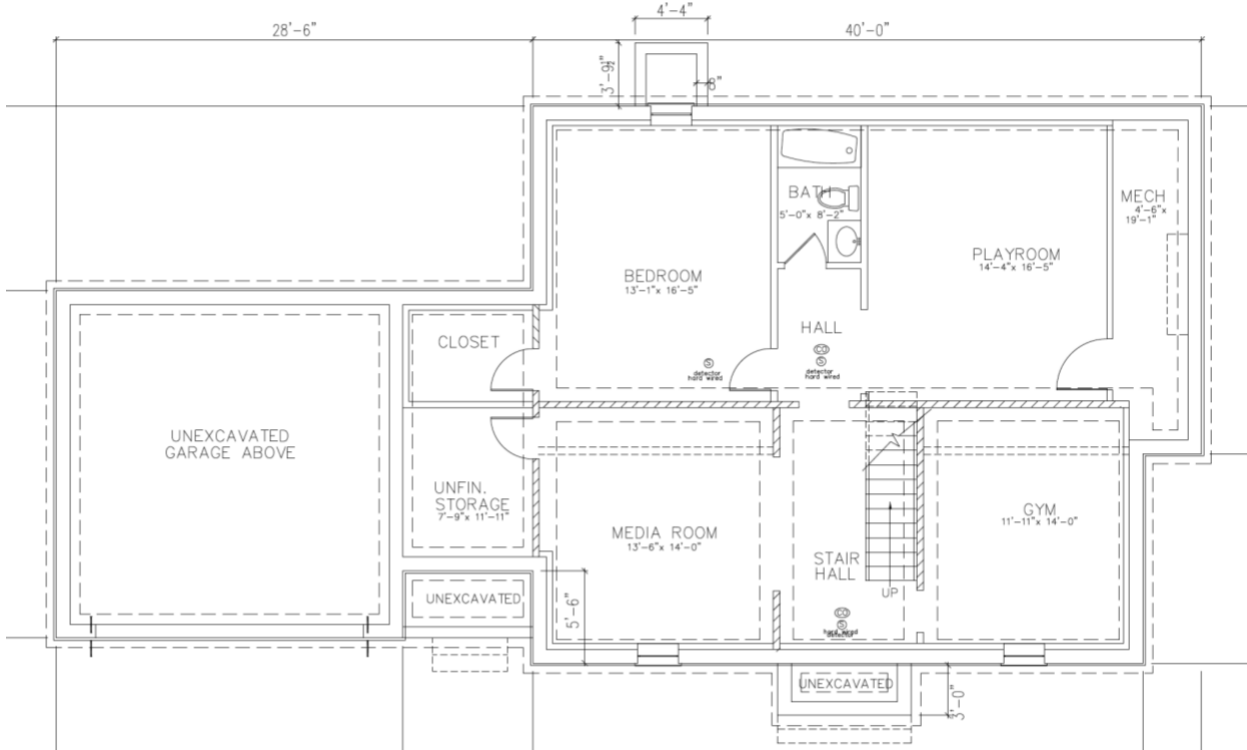
1st and 2nd Floor Plans



3rd Floor Plan



Lower Level Floor Plan



For 30 years, the SIR Development team has built 200+ homes in Fairfield County and is the proud winner of many awards. SIR Development is unique among residential builders in Fairfield County with its fully integrated construction team, including:

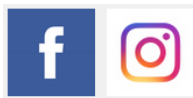
- Project Managers
- Framers and Finish Trimmers
- A Variety of Talented Designers
- Independent Fabricator of Custom Cabinetry and Millwork
- Landscaping Installation and Design Crew
- In-House Sales Team
- Exterior Property Manager
- Post-closing Project Manager

QUALITY CONTROL

With this construction team, SIR has control over the quality and workmanship of its projects. Using the most up-to-date building methods also means you will benefit from energy efficiencies and savings for years to come. SIR works with various talented designers who ensure that each home is exquisitely finished. Our team is committed to helping you place your signature on your new house and create the home that you and your family deserve.

CUSTOMER SERVICE

Every SIR home buyer receives the services of SIR's unparalleled follow up response team for one full year after closing. With its extensive in-house staff of construction professionals, SIR can respond quickly and efficiently to your questions and requests, just view our testimonials.



Follow @sirdevelopment

Local Area Attractions from 16 Dexter Road

Long Lots Elementary School.....1.2 miles
(13 Hyde Ln)

Bedford Middle School.....3.2 miles
(88 North Ave)

Staples High School.....2.7 miles
(70 North Avenue)

Longshore County Club.....5.4 miles
(260 Compo Road South)

Compo Beach.....4.9 miles
(Compo Beach Rd)

Post Office.....3.1 miles
(275 Post Road East)

Westport Main Street.....3.4 miles
(125 Main Street)

Westport Library.....3.3 miles
(20 Jesup Road)

Greens Farms Train Station.....1.9 miles
(2 Post Office Ln)

Starbucks.....1.6 miles
(1000 Post Rd E)

Stop & Shop.....0.5 miles
(1790 Post Rd E)

